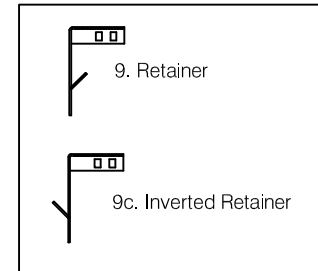
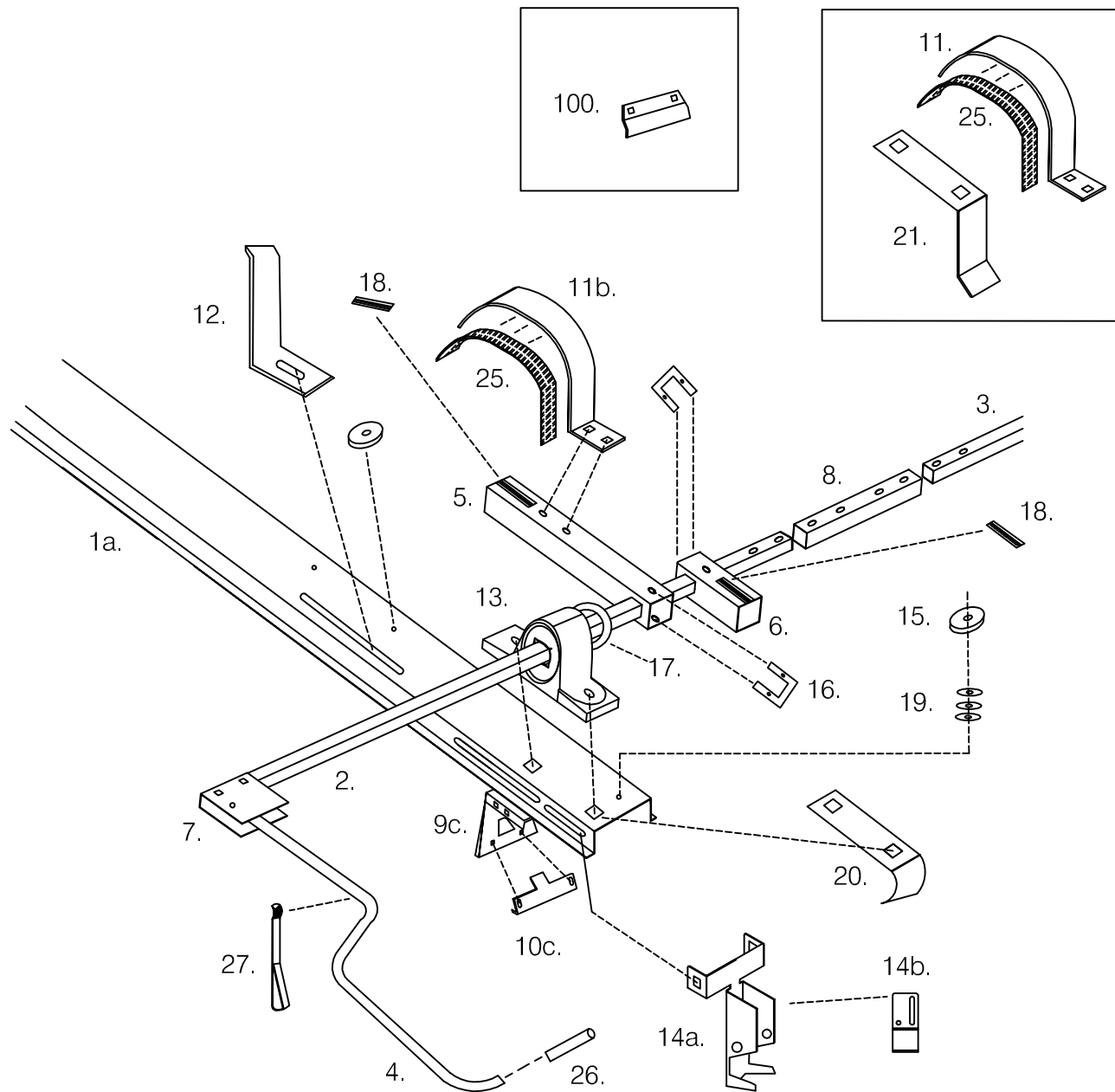


Diagram of Parts - GMC Savana or Chevy Express

Model # ER-311-GM

October 25, 2007



1. Universal Cross Member - 72"
- 1a. Rear Cross Member - 74.625"
2. Rear Shaft - 60"
3. Passenger Front Shaft - 70"
- 3a. Driver Front Shaft - 30"
4. Handle
5. Medium Elevator Arm - 13.75"
6. Short Elevator Arm
7. Handle Bracket
8. Shaft Connector
9. Retainer
- 9c. Inverted Retainer (pass. side)
- 10c. GMC Bottom Clamp
11. Medium Cradle
- 11b. Passenger Rear Cradle
12. Top Stop
13. Bearing Assembly
- 14a. Outer Lock
- 14b. Inner Lock
15. Shock Pad
16. U-Bracket
17. O-Ring
18. Anti-Slip Tread - 1" x 3"
19. Fender Washer
20. Radius Ladder Plate
21. Angled Ladder Plate
25. Anti-Slip Tread - 2" x 16"
26. Textured Rubber Grip
27. Nylon Strap
- 35c. Set of Fasteners
100. GMC Retainer Bracket