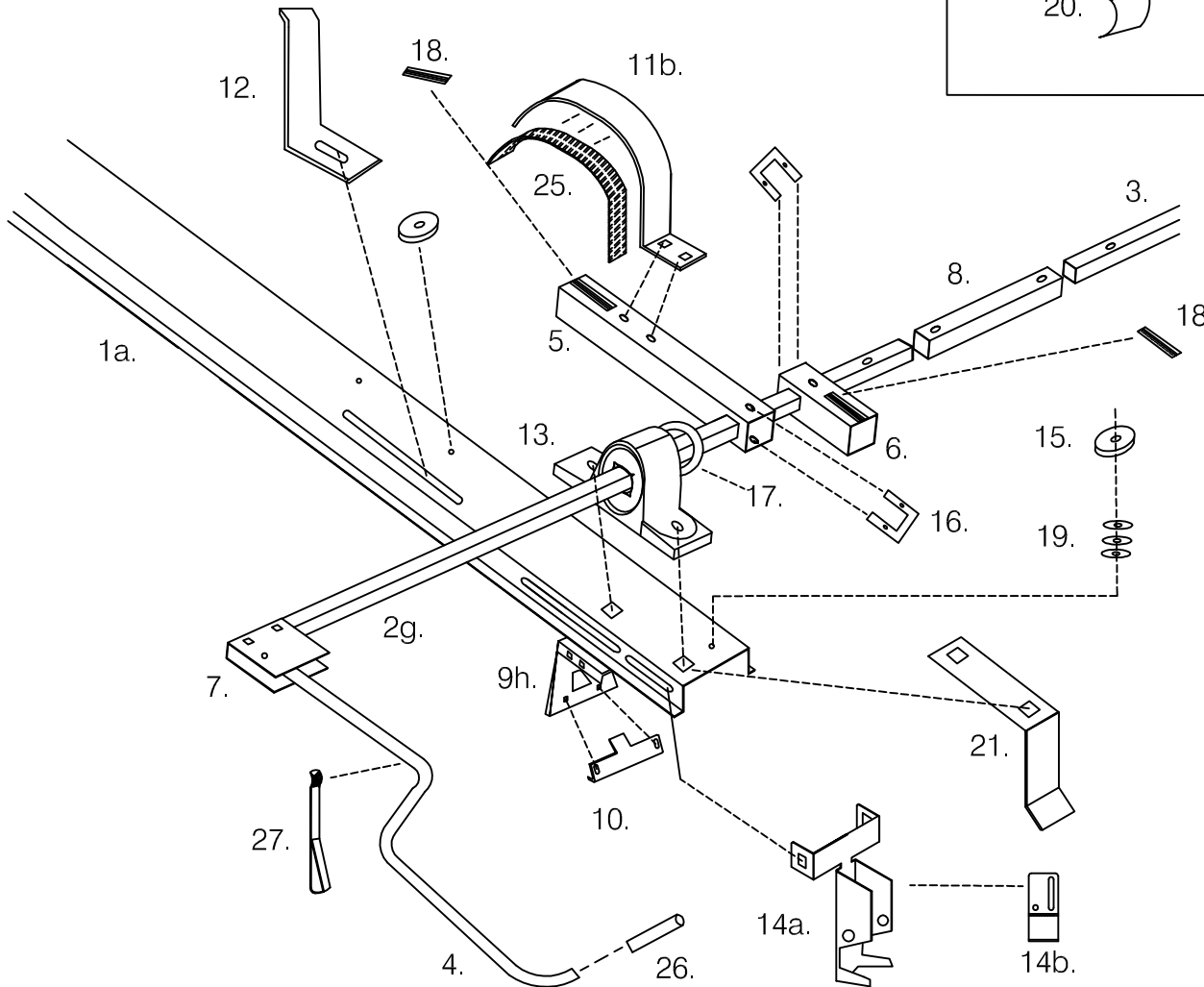
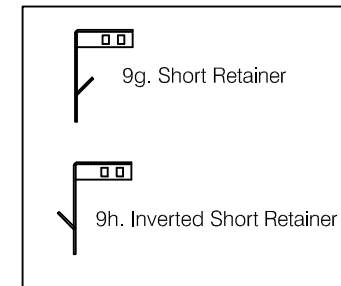
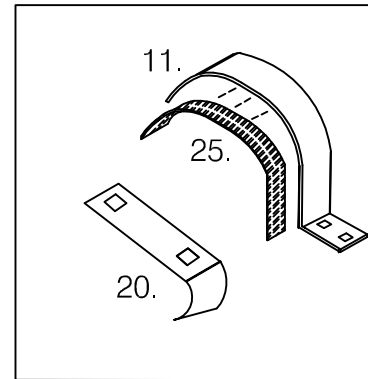


Diagram of Parts - Ford Econline with Aerial Unit

Model # ER-201-AA

October 25, 2007



- 1a. Long Cross Member - 74.625"
- 2g. Rear Shaft - 70"
- 3. Passenger Front Shaft - 70"
- 4. Short Handle
- 5. Medium Elevator Arm - 13.75"
- 6. Short Elevator Arm
- 7. Handle Bracket
- 8. Shaft Connector
- 9g. Short Retainer
- 9h. Inverted Short Retainer (pass.side)
- 10. Bottom Clamp
- 11. Medium Cradle
- 11b. Passenger Rear Cradle
- 12. Top Stop
- 13. Bearing Assembly
- 14a. Outer Lock
- 14b. Inner Lock
- 15. Shock Pad
- 16. U-Bracket
- 17. O-Ring
- 18. Anti-Slip Tread - 1" x 3.625"
- 19. Fender Washer
- 20. Radius Ladder Plate
- 21. Angled Ladder Plate
- 25. Anti-Slip Tread - 2" x 16"
- 26. Textured Rubber Grip
- 27. Nylon Strap
- 35g. Set of Fasteners